

|                   |      |     |
|-------------------|------|-----|
| CI/SfB            | (31) | Zt4 |
| CAW P10           |      |     |
| Uniclass L675:P91 |      |     |

## Description

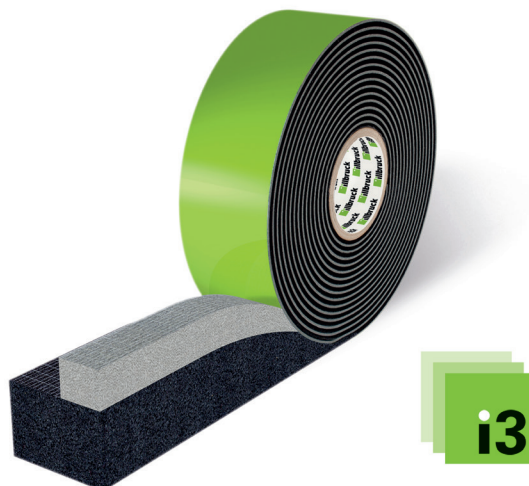
TP652 is an open cell, flexible polyurethane foam impregnated with flame-retarding modified synthetic resin. It is solvent free and self adhesive for easy use.

TP652 differs from standard impregnated foams due to the innovative illbruck composite step technology, indicated by the extra layer of grey foam towards the inner face. This results in multi-functional capability providing airtightness to Passive House levels, and in addition, a higher sd value, which means increased vapour tightness on the inside of the joint.

As with all illbruck impregnated tapes, weather tightness is assured (600 Pa minimum) and the greater depth into the joint ensures the thermal performance of the window is maintained. TP652 enhances the acoustic insulation of installed windows, providing up to 61 dB sound reduction when capped with SP525.

## Colour

Anthracite and grey (step band)



## Standard Sizes

| Joint Depth* 1) |      | Passive Housing Fully Weathertight | New Building Fully Weathertight | Renovation Concealed Installation** | Thermal Insulation*** |            | Contents |
|-----------------|------|------------------------------------|---------------------------------|-------------------------------------|-----------------------|------------|----------|
| Tape Width (mm) | Size | Tape Thickness (mm)                | Tape Thickness (mm)             | Tape Thickness (mm)                 | Tape Thickness (mm)   | Rolls /Box | /Box (m) |
| 58 #            | XS   | 4-7                                | 4-8                             | 4-9                                 | 15                    | 4          | 36       |
| 66              | XS   | 4-7                                | 4-8                             | 4-9                                 | 15                    | 4          | 36       |
| 72 #            | XS   | 4-7                                | 4-8                             | 4-9                                 | 15                    | 3          | 27       |
| 77              | XS   | 4-7                                | 4-8                             | 4-9                                 | 15                    | 3          | 27       |
| 83 #            | XS   | 4-7                                | 4-8                             | 4-9                                 | 15                    | 3          | 27       |
| 88              | XS   | 4-7                                | 4-8                             | 4-9                                 | 15                    | 3          | 27       |
| 58 #            | S    | 6-10                               | 6-12                            | 6-14                                | 22                    | 4          | 32       |
| 66              | S    | 6-10                               | 6-12                            | 6-14                                | 22                    | 4          | 32       |
| 72 #            | S    | 6-10                               | 6-12                            | 6-14                                | 22                    | 3          | 24       |
| 77              | S    | 6-10                               | 6-12                            | 6-14                                | 22                    | 3          | 24       |
| 83 #            | S    | 6-10                               | 6-12                            | 6-14                                | 22                    | 3          | 24       |
| 88              | S    | 6-10                               | 6-12                            | 6-14                                | 22                    | 3          | 24       |
| 58 #            | M    | 8-15                               | 8-18                            | 8-21                                | 33                    | 4          | 24       |
| 66              | M    | 8-15                               | 8-18                            | 8-21                                | 33                    | 4          | 24       |
| 72 #            | M    | 8-15                               | 8-18                            | 8-21                                | 33                    | 3          | 18       |
| 77              | M    | 8-15                               | 8-18                            | 8-21                                | 33                    | 3          | 18       |
| 83 #            | M    | 8-15                               | 8-18                            | 8-21                                | 33                    | 3          | 18       |
| 88              | M    | 8-15                               | 8-18                            | 8-21                                | 33                    | 3          | 18       |
| 58 #            | L    | 10-20                              | 10-24                           | 10-28                               | 45                    | 4          | 20       |
| 66              | L    | 10-20                              | 10-24                           | 10-28                               | 45                    | 4          | 20       |
| 72 #            | L    | 10-20                              | 10-24                           | 10-28                               | 45                    | 3          | 15       |
| 77              | L    | 10-20                              | 10-24                           | 10-28                               | 45                    | 3          | 15       |
| 83 #            | L    | 10-20                              | 10-24                           | 10-28                               | 45                    | 3          | 15       |
| 88              | L    | 10-20                              | 10-24                           | 10-28                               | 45                    | 3          | 15       |
| 58 #            | XL   | 15-30                              | 15-36                           | 15-42                               | 66                    | 4          | 12       |
| 66              | XL   | 15-30                              | 15-36                           | 15-42                               | 66                    | 4          | 12       |
| 72 #            | XL   | 15-30                              | 15-36                           | 15-42                               | 66                    | 3          | 9        |
| 77              | XL   | 15-30                              | 15-36                           | 15-42                               | 66                    | 3          | 9        |
| 83 #            | XL   | 15-30                              | 15-36                           | 15-42                               | 66                    | 3          | 9        |
| 88              | XL   | 15-30                              | 15-36                           | 15-42                               | 66                    | 3          | 9        |

1) Dimensional tolerance according to DIN 7715 P3

\* TP652 should fill the window construction depth as far as possible. For technical and/or aesthetic reasons, the next lowest tape width respective to the window frame width should be selected. Dimensional tolerance according to DIN 7715 P3.

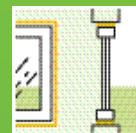
\*\* After 3 months exposure, the tape must be protected from UV.

\*\*\* As thermal insulation only. Not weather or airtight.

# Sizes available on a made to order basis only.

## TP652

### Compriband Trio Plus



#### Usage / Purpose

This multi-functional sealing tape is used to provide an airtight and driving rain-resistant seal to window and door joints while also having thermal-insulating properties across the entire depth of the perimeter gap. The newly developed inner step band and the greater interior compression from it meets demands in Passive Housing, new building and renovation. TP652 meets the requirement "tighter inside than out" in relation to water vapour diffusion according to the RAL assembly guidelines.

#### Key Benefits

- Multi-functional and wide area of application
- 600 Pa, BG1 and BGR tested according to DIN 18542
- Complies with the requirements of the RAL assembly guidelines
- Wedge-shape for easy assembly
- Achieves 41 dB sound reduction, increasing to 61 dB if capping internally with SP525

# Compriband Trio Plus

## Technical Information

| Property                                    | Test Method      | Result  |
|---|------------------|---|
| Building Classification                     | DIN 4102         | B1, low flammability  |
| Exposure Class for Impregnated Foam Tapes   | DIN 18542        | BG1 + BGR   |
| Thermal Conductivity                        | DIN 52612        | $\lambda = 0.048 \text{ W/(m.K)}$   |
| U-Value: Window construction depth 60 mm    |                  | $0.8 \text{ W/(m}^2 \cdot \text{K)}$  |
| U-Value: Window construction depth 70 mm    |                  | $0.7 \text{ W/(m}^2 \cdot \text{K)}$  |
| U-Value: Window construction depth 80 mm    |                  | $0.6 \text{ W/(m}^2 \cdot \text{K)}$  |
| Water vapour diffusion, Sd value externally | DIN EN ISO 12572 | $< 0.5 \text{ m}$   |
| Water Vapour Gradient                       |                  | Inside tighter due to step band   |
| Joint Permeability                          | DIN EN 1026      | $\alpha < 0.1 \text{ m}^3/[\text{h} \cdot \text{m} \cdot (\text{daPa})^{2/3}]$  |
| Resistant to Driving Rain                   | DIN EN 1027      | 600 Pa  |
| Acoustic Insulation                         | DIN EN ISO 717-1 | 41 dB sound reduction using size 8 – 15 in a 15 mm wide joint<br>61 dB reduction in 10 mm wide joint in combination with SP525  |
| Compatibility with Conventional Materials   | DIN 18 542       | Specified according to BG1, carry out a compatibility test in products with solvents or plasticisers  |
| Emissions Test                              | AgBB/DIBT        | Suitable for interior spaces  |
| Service Temperature                         |                  | -30°C to +80°C  |
| Storage                                     |                  | Store rolls horizontally and in original carton between +8°C and +20°C in dry conditions and away from direct sunlight. Re-seal packaging between use to prevent expansion during storage |
| Shelf Life                                  |                  | 9 months when stored in its original unopened containers  |

## Preparation

- A tape measure, flat blade and scissors or knife are required for installation.
- Ideally the tape should be stored and used at temperatures between 10- 20°C. High temperatures accelerate the tape expansion process and low temperatures slow it down.
- The window opening should be continuous, and free from debris which may protrude into the perimeter joint.
- Clean the sides of the window frame.

## Application

- Select the tape dimensions according to the table after determining the window frame depth and joint width.
- Make sure that the grey step band is pointing towards the room interior.
- Prior to applying from a new roll, cut off the wedge shaped section at the start of the roll.
- Add 20 mm/m when cutting tape to length.
- If the joint width is narrow in relation to the tape thickness, spraying a misting of water into the joint may assist with frame installation.
- To ensure a weathertight seal to the bottom corners, apply a 10 mm diameter bead of SP525 to bottom corners of the window opening to match joint depth of tape (Fig 1).
- For the sill application, cut appropriate length of tape to suit opening width, ensuring a tight fit to each corner. Apply the TP652, with self-adhesive face down and ends bedded in the SP525 beads (Fig. 2).
- To accommodate setting blocks, notch out the tape around the blocks using a sharp knife (Fig. 3 & 4), ensuring a minimum 20 mm of tape remains to the external face of the tape. To maintain optimal airtightness, seal around the inner face of the setting block with SP525.
- Apply the tape to the head and two sides of the window, with the head application to full opening width and the sides tightly butting up to the underside of the head application (Fig. 5).
- The window can be fixed either through the frame or by using fixing lugs/ brackets.
- If frame packers are required, insert the packer between the pre-compressed TP652 and the window opening, fix the frame and then remove the packers. The tape will subsequently expand and fully seal the gap with the frame remaining secured in position.

## “i3” Window Sealing System

- Part of the state of the art, ift- approved sealing system, with a 10 year guarantee.\* This system fulfils the EnEV requirements with regards to airtightness.; \*Under the conditions specified by the manufacturers. Only valid on receipt of the correct registration documents in accordance with terms and conditions, available on request.

## Please Note

The compatibility of any paint or sealant coverings must be tested.

## Health & Safety Precautions

Safety data sheet must be read and understood before use.

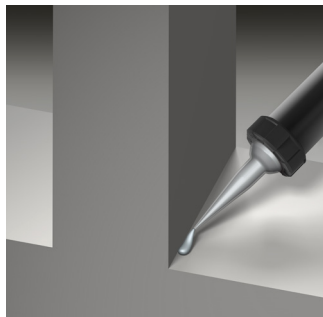


Figure 1: Apply a 10 mm diameter bead of SP525 to bottom corners of the window opening to match joint depth of tape

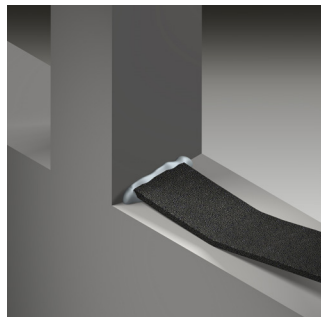


Figure 2: Apply the TP652, with self-adhesive face down and ends bedded in the SP525 beads



Figure 3: To accommodate setting blocks, notch out tape

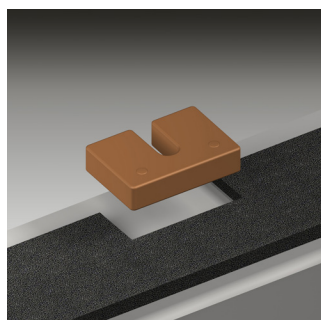


Figure 4: To accommodate setting blocks, notch out tape



Figure 5: Apply the tape to the head and two sides of the window

#### Technical Service

Tremco CPG UK Limited has a team of experienced Technical Sales Representatives who provide assistance in the selection and specification of products. For more detailed information, service and advice, please call Customer Services on 01942 251400.

#### Guarantee / Warranty

Tremco CPG UK Limited products are manufactured to rigid standards of quality. Any product which has been applied (a) in

accordance with Tremco CPG UK Limited written instructions and (b) in any application recommended by Tremco CPG UK Limited, but which is proved to be defective, will be replaced free of charge.

No liability can be accepted for the information provided in this leaflet although it is published in good faith and believed to be correct. Tremco CPG UK Limited reserves the right to alter product specifications without prior notice, in line with Company policy of continuous development and improvement.



**Tremco CPG UK Limited**  
Coupland Road  
Hindley Green, Wigan WN2 4HT  
United Kingdom  
T: +44 1942 251400  
F: +44 1942 251410

info.uk@tremcocpg.com  
www.tremcocpg.eu